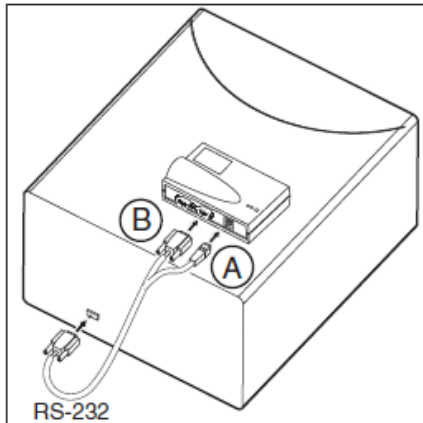


## 2 Connecting radio module HW8612/F2 to milling unit CEREC 3



1. Plug the connector for the power supply **A** into the radio module.
2. Plug the connector **B** of the RS-232 cable into the radio module and screw firmly into place.
3. Plug the connector at the other end of the RS-232 cable into the COM1 interface on the milling unit and screw firmly into place.
4. Place the radio module with the pre-mounted magnetic strips on the milling unit.

### 3 Installing the supplied programs

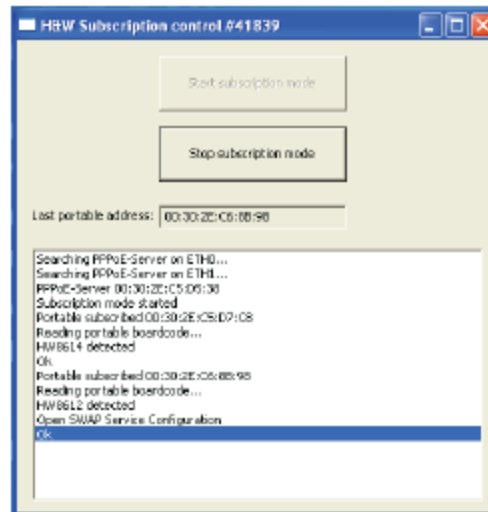
- ✓ The acquisition unit is switched on and the operating system has booted up.
- ✓ All programs are closed.
- 1. Insert the supplied installation CD for the H&W radio modules into the CD/DVD drive.
  - ↳ The CD starts automatically. The *"Autoplay"* dialog box opens.
- 2. Start the *"Setup.exe"* program.
- 3. If the CD does not start automatically, navigate to the main directory for the CD in the Explorer and start the program *"Setup.exe"*.
- 4. In the next window, click the *"Next"* button.
- 5. In the next window, select the checkbox next to *"I accept the terms of the licence agreement"*, and click on *"Next"*.
- 6. In the next window, click the *"Install"* button.
  - ↳ The setup program checks the existing configuration of the CEREC AC acquisition unit. If the H&W software has previously been installed on this acquisition unit, the setup program terminates with the following message: "The latest version of the SWAP-Service was already found on the system". If you confirm this message with *"OK"*, the program *"SubsControl"* is started without requiring a restart. Then continue the installation with one of the following two chapters.
  - ↳ If there is no existing installation, the system installs the software packages *"WinPcap"*, *"SWAP-Service"* and *"SubsControl"* in sequence.
- 7. Click on *"Next"* in the next two windows that appear.
- 8. In the next window, click the *"I Agree"* button.
- 9. In the next window, click the *"Finish"* button.
- 10. In the next window, select the checkbox next to *"Yes, I want to restart my computer now"*, and click on *"Finish"*.
  - ↳ The CEREC AC-PC is restarted.
  - ↳ After the restart, the program *"SubsControl"* is started automatically.

## 5 Pairing radio modules of the CEREC 3 milling units with those of the CEREC AC acquisition unit

### 5.1 Pairing the first radio module of the CEREC 3 milling unit

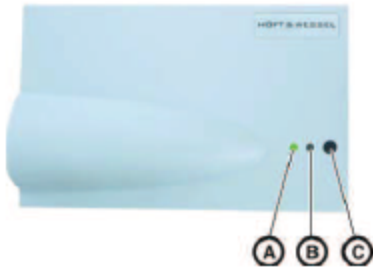
- ✓ A 8612/F2 radio module is connected to the CEREC 3 milling unit.
  - ✓ A 8614/F2 radio module is installed in the CEREC AC acquisition unit.
  - ✓ The acquisition unit is switched on and the operating system has booted up.
  - ✓ The "SubsControl" program has started (see "Installing the supplied programs [ → 5]").
1. If the "SubsControl" program has not started, insert the installation CD and start the "Setup.exe" program. Follow the instructions on the screen and click "Next", followed by "Install" and "OK", until the "SubsControl" program is started.
  2. In the window for the "SubsControl" program, click the "Start subscription mode" button.

Start subscription mode

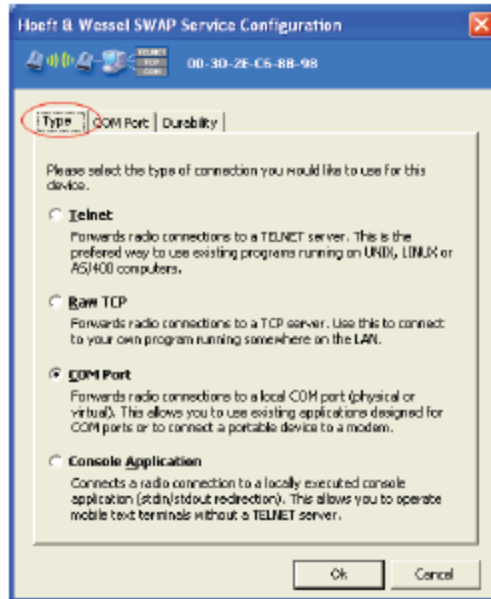


## Pairing H & W Transmitters Running AC Omnicam with Compact Mill

Sirona Dental Systems GmbH 5 Pairing radio modules of the CEREC 3 milling units with those of the CEREC AC acquisition unit  
Installation Instructions for Pairing the Radio Modules HW8614/F2 and HW8612/F2 CEREC AC 5.1 Pairing the first radio module of the



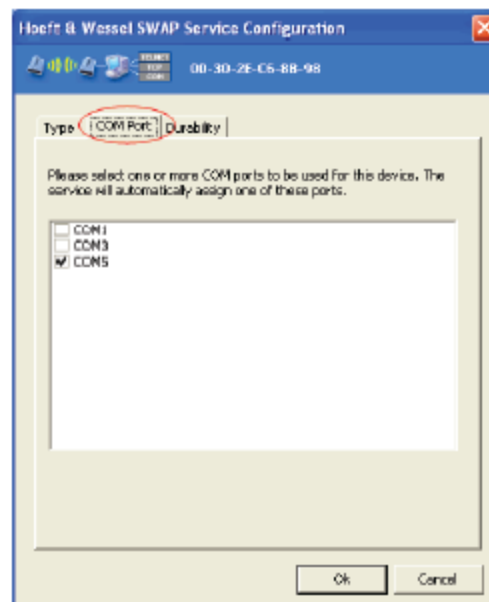
3. When "Subscription mode started" or "OK" is displayed as the last message, press and hold the black **C** button on the radio module of the CEREC 3 milling unit for at least 6 seconds.
4. When the red LED **B** starts to flash, release the button.
  - ↳ The pairing process is now underway.
  - ↳ When the pairing has been performed successfully, the "SWAP Service Configuration" window opens automatically. In this window, you need to assign a virtual COM address to the newly paired serial radio module.



5. On the "Type" tab, check that the checkbox next to "COM Port" is selected.

## Pairing H & W Transmitters Running AC Omnicam with Compact Mill

5 Pairing radio modules of the CEREC 3 milling units with those of the CEREC AC acquisition unit      Sirona Dental Systems GmbH  
5.1 Pairing the first radio module of the CEREC 3 milling unit      Installation Instructions for Pairing the Radio Modules HW8614/F2 and



6. Click the "COM Port" tab.
7. Select the checkbox next to one of the free COM interfaces displayed (preferably COM5) and click "OK" to confirm.
  - ↳ At the end of the configuration process, the overview window is displayed. The radio module, together with its addresses and the previously selected COM interface should now be listed in the status window.

## Pairing H & W Transmitters Running AC Omnicam with Compact Mill

The default pairing of H&W radio modules will cause a conflict with the Omnicam LAN adapter. As a result, communication with Compact milling units cannot be established. To correct this, change the Network Device in the H&W SWAP Service from "(auto-selection)" to "Intel® 82579V Gigabit Network Connection" as shown below.

Note: MC XL Milling units are not affected and do not need this change to the Swap Service.

Note the SWAP Service should show currently running.

Network Device must be set to Intel®82579V Gigabit Network Connection for any Omnicam with PC series 2.2.1, 2.2.2, or 2.2.3

Device Address	EMC	Dect No	Connection Type
Default			COM Port: COM5
00-30-2E-C6-5C-70	2921	416880	COM Port: COM5

Stop subscription mode

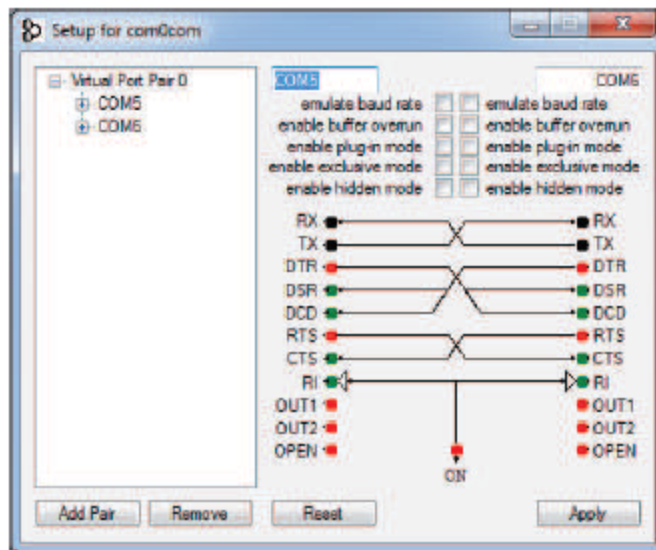
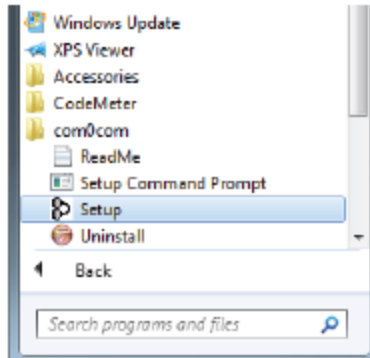
8. Click "OK" to close this window.
9. Click the "Stop subscription mode" button in the "Subscription Control" window to complete the pairing process.

# Pairing H & W Transmitters Running AC Omnicam with Compact Mill

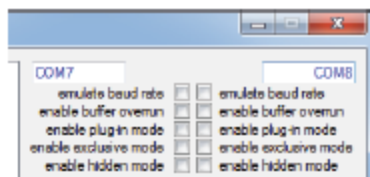
10. Close the window to exit the program.
11. Open the CEREC 3D program and in the "Settings" menu, choose "Configuration"> "Devices...".
12. Click on the "Add automatically" button.
  - ↳ The CEREC 3 milling unit is now included in the list of devices.

## 5.2 Pairing another radio module of the CEREC 3 milling unit

1. In the program menu, select "com0com" > "Setup".
  - ↳ The overview of the available virtual COM interfaces (COM ports) appears.

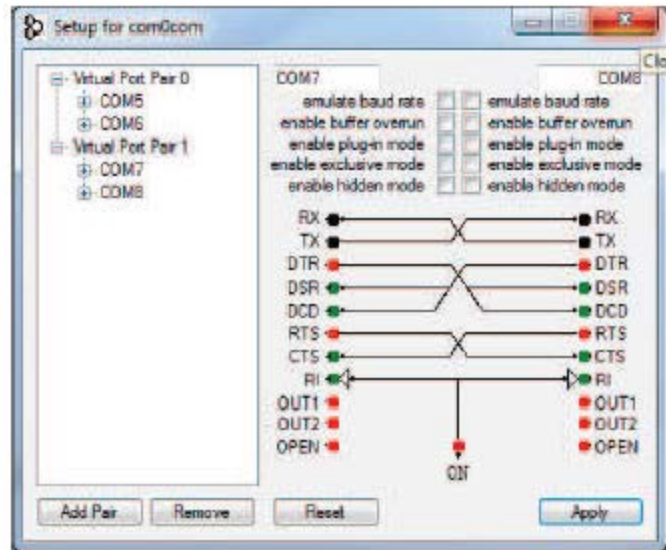


2. Click on the "Add Pair" button to set up a new virtual COM interface pair (e.g. "Virtual Port Pair 1").
3. Enter the new interface names e.g., COM7 and COM8.

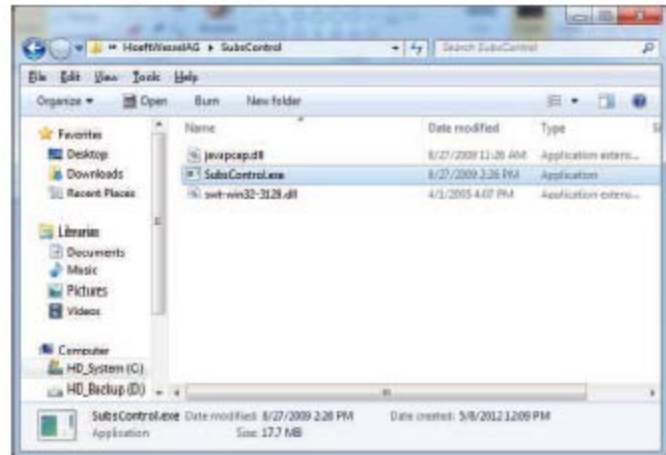


# Pairing H & W Transmitters Running AC Omnicam with Compact Mill

5 Pairing radio modules of the CEREC 3 milling units with those of the CEREC AC acquisition unit      Sirona Dental Systems GmbH  
5.2 Pairing another radio module of the CEREC 3 milling unit      Installation Instructions for Pairing the Radio Modules HW8614/F2 and



4. Click the "Apply" button.
5. Click button A to acknowledge a potential incompatibility message confirming that the program has been installed correctly.



6. Once another COM interface pair has been set up, connect the radio module of another CEREC 3 milling unit to the CEREC AC. To do so, run the H&W software "subsControl.exe" from the folder "C:\Program Files (x86)\HoeltWesselAG\SubsControl".
7. In the window for the "SubsControl" program, click the "Start subscription mode" button.

Start subscription mode

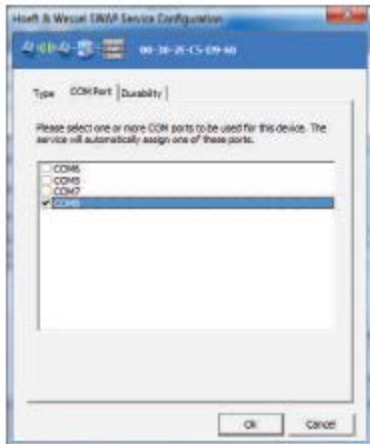


# Pairing H & W Transmitters Running AC Omnicam with Compact Mill

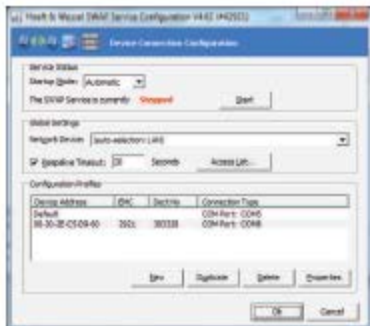
Sirona Dental Systems GmbH 5 Pairing radio modules of the CEREC 3 milling units with those of the CEREC AC acquisition unit  
 Installation Instructions for Pairing the Radio Modules HW8614/F2 and HW8612/F2 CEREC AC 5.2 Pairing another radio module of the



8. When "Subscription mode started" or "OK" is displayed as the last message, press and hold the black **C** button on the radio module of the CEREC 3 milling unit for at least 6 seconds.
9. When the red LED **B** starts to flash, release the button.
  - ↳ The pairing process is now underway.
  - ↳ When the pairing has been performed successfully, the "SWAP Service Configuration" window opens automatically. In this window, you need to assign a virtual COM address to the newly paired serial radio module.



10. Select one of the two new COM interfaces (e.g. COM8) and confirm with "OK".



11. Stop the Swap Service Configuration with "OK".



12. Click the "Stop subscription mode" button in the "Subscription Control" window to complete the pairing process.

13. Close the window to exit the program.

14. Start the CEREC SW 4.x software and establish the connection to the CEREC 3 milling unit in "Configuration" > "Devices...", by selecting the COM7 connection and confirming with "OK".

- ↳ The pairing is now complete.

